

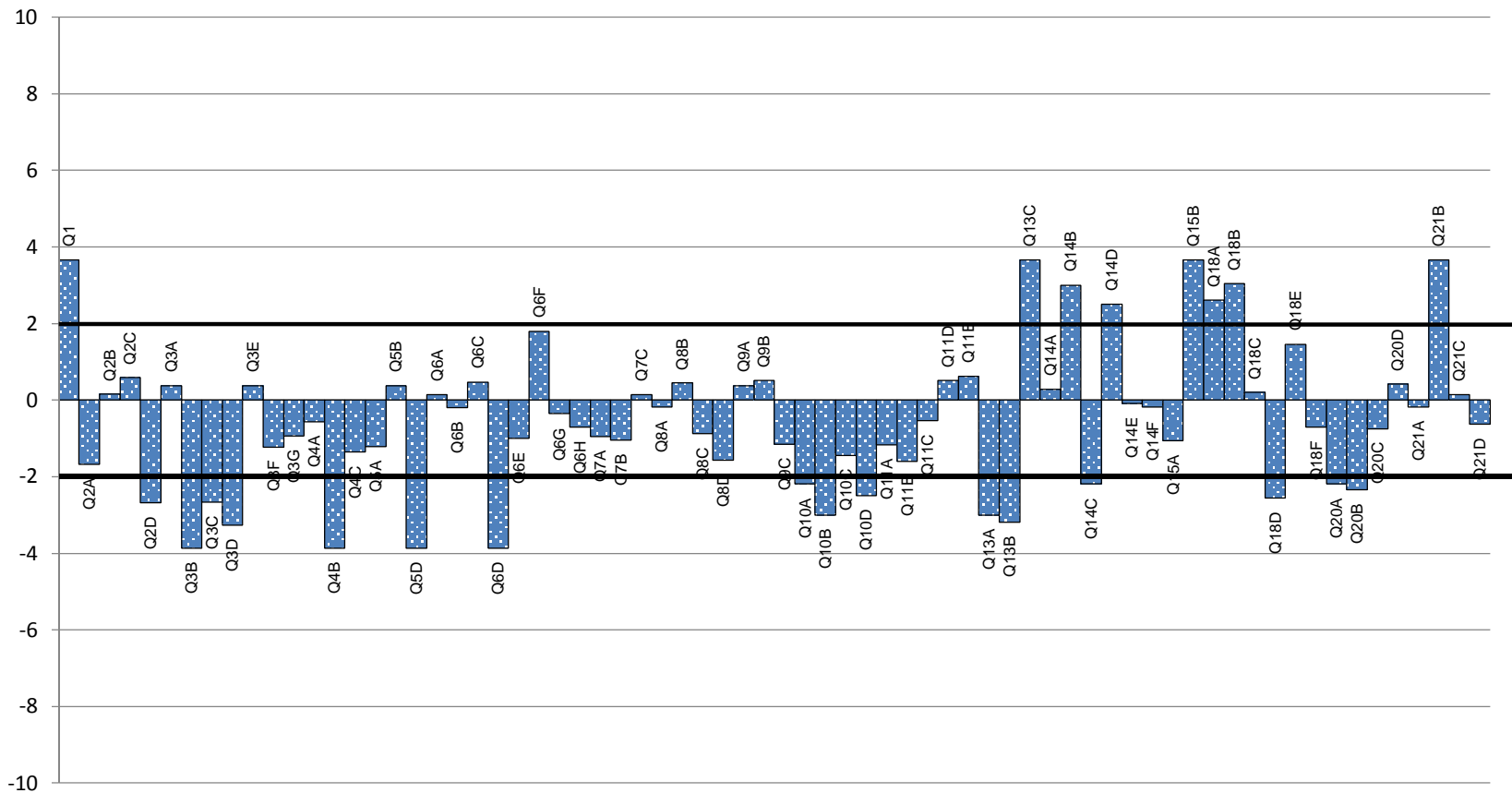
NFER Attitude Surveys

Overview chart

2011-2012

NFER Primary School

The chart below shows the extent to which responses from pupils at your school are better or worse than responses nationally. These are displayed in terms of t-values(1) so that roughly speaking any values above +2 indicate that responses are significantly better in your school and any values below -2 indicate that responses are significantly worse.



(1) A t-values is a statistical measure of the difference between two quantities. For the purposes of this chart they are truncated to be between -9 and +9.