

We also have a number of co-investigators who are helping with parts of this programme:



Shyamoli Patel
Cambridge
Econometrics

RQ 1: Providing baseline economic forecasts for the UK and regions to 2035, as well as alternative projections for automation scenarios and accompanying reporting. For use by Warwick and Sheffield



Professor
Rob Wilson
University of
Warwick

RQ1: Updating Working Futures - a quantitative assessment of the employment prospects for the UK, including the future size and composition of the labour market. **RQ2** – Providing support to NFER on our simulation modelling of the supply of essential employment skills in 2035



Professor Andrew
Dickerson
University of
Sheffield

RQ1: Will be utilising the detailed occupational employment projections produced by Working Futures to generate estimates of future knowledge-based and essential employment skill demands.



Professor
Bryony Hoskins
University of
Roehampton

RQ2: Will be providing support and expertise to NFER colleagues who are developing our approach to measuring essential employment skills, for use in our survey instrument



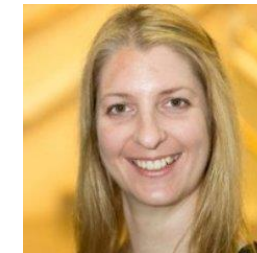
Richard Brind
Kantar Public

Essential Employment Skills survey: Piloting potential skills measures, running the 3 main stage data collection activities, and provision of the final essential skills dataset, which will be used for RQs 2, 3 and 4



Professor Steven
McIntosh
University of
Sheffield

RQ4: Educational Trajectories Matching LEO & ASHE data to essential employment skills measure data to consider how different trajectories relate to the development of skills



Sam Avanzo-
Windett
Learning
& Work Institute

Comms and Influencing
with particular focus on employers sector