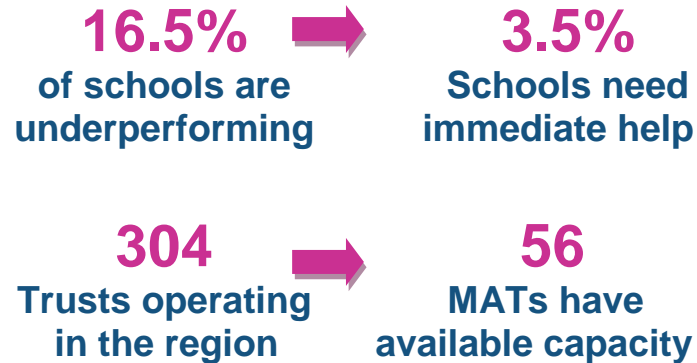


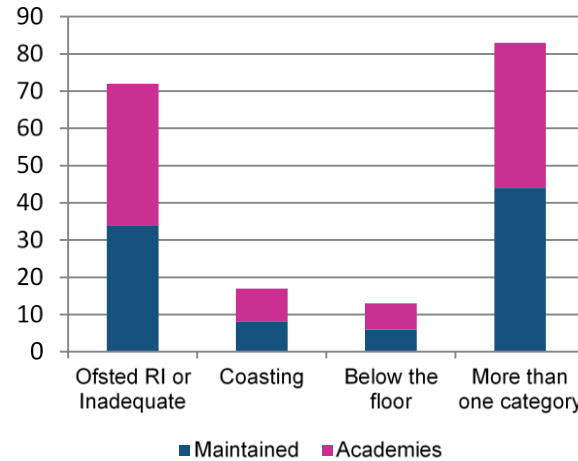
Lancashire and West Yorkshire faces major challenges in terms of underperforming school numbers and having insufficient levels of available capacity to meet its needs.

1. Lancashire and West Yorkshire has 521 underperforming schools, the second largest of all regions, although it has the most schools.
2. There are low to average proportions of schools in each underperformance category (poor Ofsted, schools coasting and below the floor) in the primary sector, but the highest in the secondary sector.
3. The region has 109 underperforming schools identified as having an immediate need, by far the largest of all RSC regions.
4. There are 56 MATs that are ready for expansion with capacity to take on 75 underperforming schools. There is insufficient available capacity to meet the immediate need (ratio 0.7 to 1).

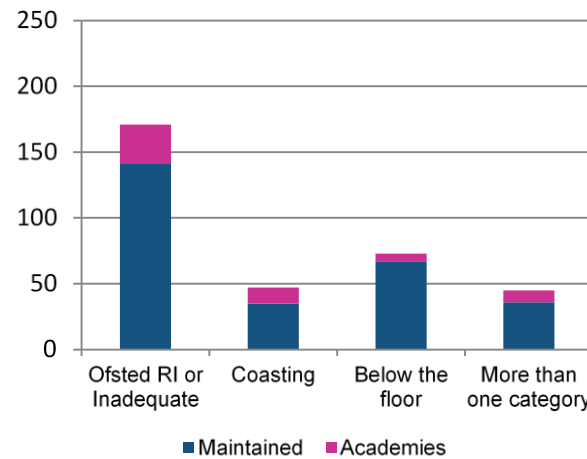
Key facts:



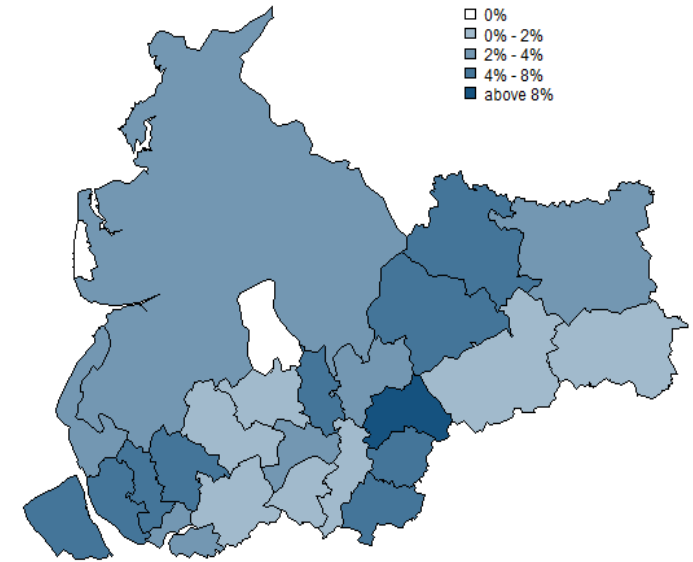
Lancashire and West Yorkshire has the highest number and highest proportion of underperforming **secondary** schools.



However, the region has slightly more than the average number of underperforming **primary** schools.



Lancashire and West Yorkshire contains three of the top ten LAs with the highest proportion of schools with an immediate need.



The region has very low available capacity, but there are 141 high-performing SATs that the RSC might approach to find new trusts to help.

